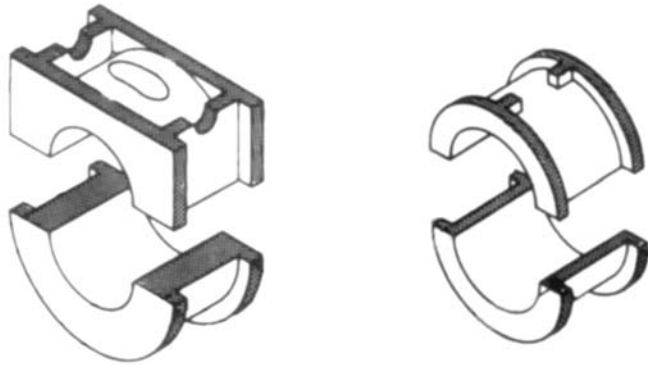
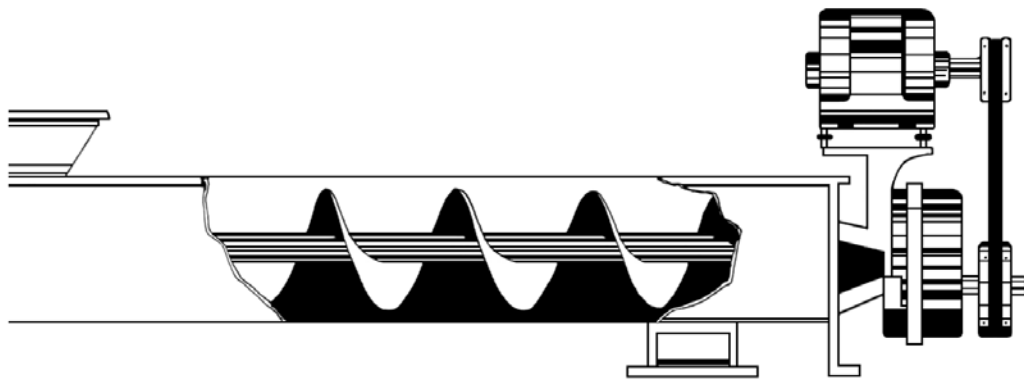
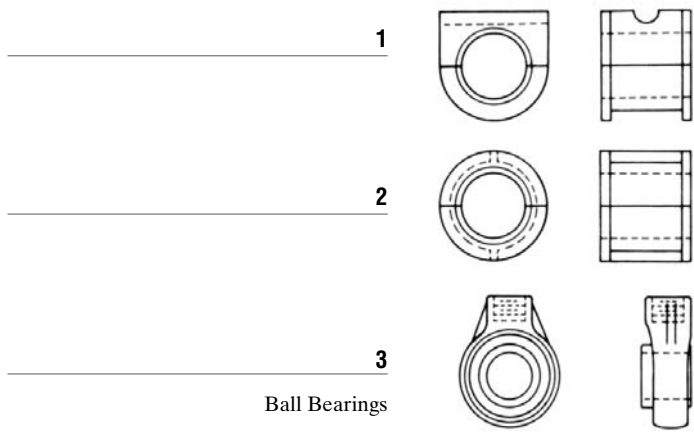


HANGER BEARINGS

Baghouse Dry Bearings



Hanger Type	Bearing	Bore	Part Number	Weight
216	1	1	* CB 161	.50
		1 1/2	* CB 16112	1.6
		2	* CB 162	2.7
230	1	2 7/16	* CB 162716	6.2
		3	* CB 163	8.0
316	1	3 7/16	* CB 163716	13.7
220	2	1	* CBX 1	.50
		1 1/2	* CBX 112	1.0
		2	* CBX 2	2.0
		2 7/16	* CBX 2716	4.0
		30	* CBX 3	5.0
		50	* CBX 3716	9.0
60	3	1	S 1347M-16	2.0
		1 1/2	S 1347M-24	3.5
		2	S 1347M-32	5.6
		2 7/16	S 1347M-39	9.0
		300A	3	S 1347M-48



ASBYCO



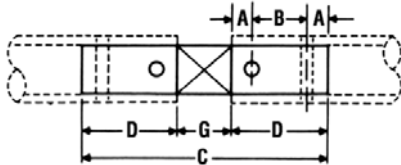
SCREW CONVEYOR SHAFTS

1. COUPLINGS (GUDGEON) PINS

Accouplements

To connect adjoining lengths of conveyor screws with hanger bearings.

Sert à attacher deux vis d'archimède adjacentes à un palier support.



Shaft Diameter	Part Number	A	B	C	D	G	Weight
1	CC1	1/2	2	7 1/2	3	1 1/2	1.5
1 1/2	CC112	7/8	3	11 1/2	4 3/4	2	5.6
2	CC2	7/8	3	11 1/2	4 3/4	2	9.8
2 7/16	CC2716	1 5/8	3	12 3/4	4 7/8	3	15.4
3	CC3	1	3	13	5	3	23.8
3 7/16	CC3716	1 1/2	4	18	7	4	44.5

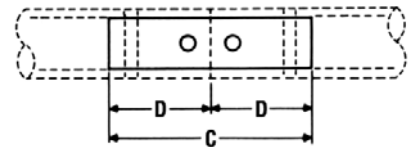
Part Shaft Diameter	Number Standard	C	D	Weight
1	CCC1	6	3	1.3
1 1/2	CCC112	9 1/2	4 3/4	4.8
2	CC2	9 1/2	4 3/4	8.5
2 7/16	CCC2716	9 3/4	4 7/8	12.9
3	CCC3	10	5	20.0
3 7/16	CCC3716	14	7	37.0

CLOSE COUPLINGS

Accouplements d'assemblage

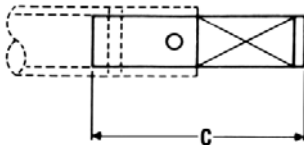
Same application as no.1 but no space for hanger bearings.

Même application que no.1 mais aucun espace réservé au palier support.



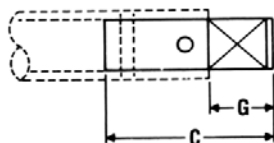
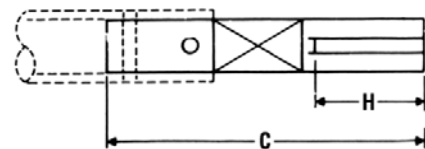
2. END COUPLINGS

Accouplements d'extrémité



Shaft Diameter	Part Number	"C" Babbit Bearing		"C" Ball Bearing		Weight
		W/Seal	Without Seal	W/Seal	Without Seal	
		B-B	B-A	BB-B	BB-A	
1 1/2	CES112	11	9 1/4	10	8 1/4	4.8
2	CES2	12	10 1/4	10 3/8	8 3/8	9.4
2 7/16	CES2716	13 5/8	11 7/8	11 3/8	9 5/8	14.9
3	CES3	14 7/8	13 1/8	12 3/8	10 5/8	24.0
3 7/16	CES3716	18 5/8	16 3/8	15 5/8	13 3/8	37.0

Shaft Diameter	Part Number	"C" Babbit Bearing		"C" Ball Bearing		Weight
		W/Seal	Without Seal	W/Seal	Without Seal	
		B-B	B-A	BB-B	BB-A	
1 1/2	CES112	11	9 1/4	10	8 1/4	4.8
2	CES2	12	10 1/4	10 3/8	8 3/8	9.4
2 7/16	CES2716	13 5/8	11 7/8	11 3/8	9 5/8	14.9
3	CES3	14 7/8	13 1/8	12 3/8	10 5/8	24.0
3 7/16	CES3716	18 5/8	16 3/8	15 5/8	13 3/8	37.0

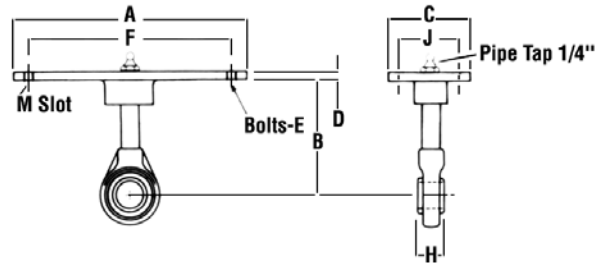
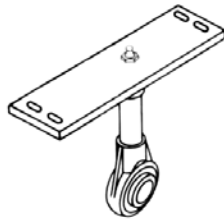


Shaft Diameter	Part Number Standard	C	G	Weight
1	CEH1	4 5/8	1 5/8	1.0
1 1/2	CEH112	6 7/8	2 1/8	3.5
2	CEH2	6 7/8	2 1/8	6.2
2 7/16	CEH2716	8 1/8	3 1/4	10.6
3	CEH3	8 1/4	3 1/4	16.5
3 7/16	CEH3716	11 1/4	4 1/4	29.7

HANGERS

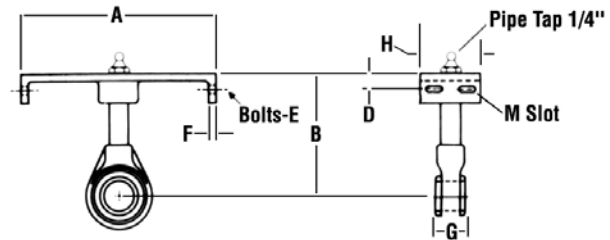
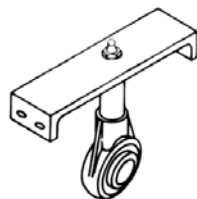


STYLE 60



Conveyor Diameter	Coupling Diameter	Part Number	A	B	C	D	E	F	H	J	Weight Each	M Slot
6	1 1/2	CH660112	9 3/4	4 1/2	4	1/4	3/8	8 3/4	1 15/16	2 1/2	7	7/16 x 7/8
9	1 1/2	CH960112	13 1/2	6 1/8	4	1/4	3/8	12 1/4	1 15/16	2 1/2	8	7/16 x 7/8
	2	CH9602		6 1/8				12 1/4	2		9	
10	1 1/2	CH1060112	14 1/2	6 3/8	4	1/4	3/8	13 1/4	1 15/16	2 1/2	9	7/16 x 7/8
	2	CH10602		6 3/8				13 1/4	2		10	
12	2	CH12602	17 1/2	7 3/4	5	3/8	1/2	15 3/4	2	2 1/2	12	9/16 x 3/4
	2 7/16	CH12602716		7 3/4			1/2	15 3/4	2 9/16		20	
	3	CH12603		7 3/4			1/2	15 3/4	3		30	
14	2 7/16	CH14602716	19 1/2	9 1/4	5	3/8	1/2	17 3/4	2 9/16	2 1/2	21	9/16 x 3/4
	3	CH14603		9 1/4				17 3/4	3	2 1/2	32	
16	3	CH16603	26 1/2	10 5/8	5	3/8	1/2	19 3/4	3	2 1/2	35	9/16 x 3/4
18	3	CH18603	24 1/2	12 1/8	5	1/2	5/8	22 1/4	3	3 1/2	40	11/16 x 7/8
20	3	CH28603	26 1/2	13 1/2	5	1/2	5/8	24 1/4	3	3 1/2	45	11/16 x 7/8

STYLE 70



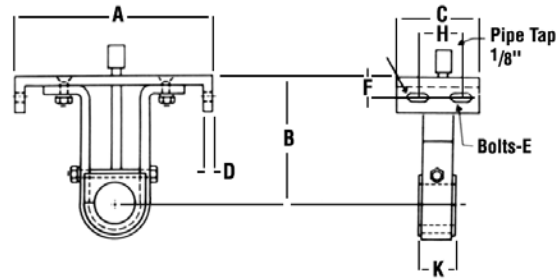
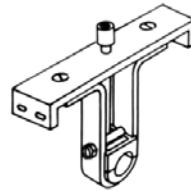
Conveyor Diameter	Coupling Diameter	Part Number	A	B	C	D	E	F	G	H	Weight Each	M Slot
6	1 1/2	CH670112	7	4 1/2	2 1/2	3/4	3/8	1/4	1 15/16	4	7	7/16 x 7/8
9	1 1/2	CH970112	10	6 1/8	2 1/2	1	3/8	1/4	1 15/16	4	8	7/16 x 7/8
	2	CH9702	10	6 1/8	2 1/2	1	3/8	1/4	2		9	
10	1 1/2	CH1070112	11	6 3/8	2 1/2	1	3/8	1/4	1 15/16	4	9	7/16 x 7/8
	2	CH10702	11	6 3/8	2 1/2	1	3/8	1/4	2		10	
12	2	CH12702	13	7 3/4	2 1/2	1 1/4	1/2	3/8	2	5	12	9/16 x 3/4
	2 7/16	CH12702716	13	7 3/4	2 1/2	1 1/4	1/2	3/8	2 9/16		20	
	3	CH12703	13	7 3/4	2 1/2	1 1/4	1/2	3/8	3		30	
14	2 7/16	CH14702716	15	9 1/4	2 1/2	1 3/8	1/2	3/8	2 9/16	5	21	9/16 x 3/4
	3	CH14703	15	9 1/4	2 1/2	1 3/8	1/2	3/8	3		32	
16	3	CH16703	17	10 5/8	2 1/2	1 3/8	1/2	3/8	3	5	35	9/16 x 3/4
18	3	CH18703	19	12 1/8	3 1/2	1 5/8	5/8	1/2	3	5	40	11/16 x 7/8
20	3	CH20703	21	13 1/2	3 1/2	1 5/8	5/8	1/2	3	5	45	11/16 x 7/8

ASYBCO



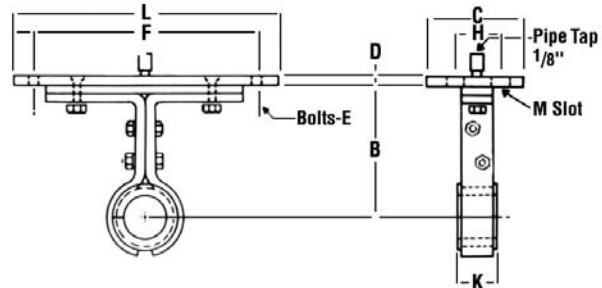
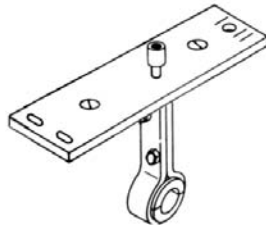
HANGERS

STYLE 216



Conveyor Diameter	Coupling Diameter	Part Number	A	B	C	D	E	F	H	K	M Slot	Weight Each
6	1 1/2	CH6216112	7	4 1/2	4	1/4	3/8	3/4	2 1/2	2	7/16 x 7/8	5
9	1 1/2	CH9216112	10	6 1/8	4	1/4	3/8	1	2 1/2	2	7/16 x 7/8	7 9
		CH92162	10	6 1/8	4	1/4	3/8	1	2 1/2	2		
10	1 1/2	CH10216112	11	6 3/8	4	1/4	3/8	1	2 1/2	2	7/16 x 7/8	8 10
		CH102162	11	6 3/8	4	1/4	3/8	1	2 1/2	2		
12	2 2 7/16 3	CH122162	13	7 3/4	5	3/8	1/2	1 1/4	2 1/2	2	9/16 x 3/4	14 18 21
		CH122162716	13	7 3/4	5	3/8	1/2	1 1/4	2 1/2	3		
		CH122163	13	7 3/4	5	3/8	1/2	1 1/4	2 1/2	3		
14	2 7/16 3	CH142162716	15	9 1/4	5	3/8	1/2	1 3/8	2 1/2	3	9/16 x 3/4	23 25
		CH142163	15	9 1/4	5	3/8	1/2	1 3/8	2 1/2	3		
16	3	CH162163	17	10 5/8	5	3/8	1/2	1 3/8	2 1/2	3	9/16 x 3/4	28
18	3 3 7/16	CH102163	19	12 1/8	5	1/2	5/8	1 5/8	3 1/2	3	11/16 x 7/8	34 44
		CH182163716	19	12 1/8	5	1/2	5/8	1 5/8	3 1/2	4		
20	3 3 7/16	CH202163	21	13 1/2	5	1/2	5/8	1 5/8	3 1/2	3	11/16 x 7/8	36 47
		CH202163716	21	13 1/2	5	1/2	5/8	1 5/8	3 1/2	4		
24	3 7/16	CG242163716	25	16 1/2	5	1/2	5/8	1 3/4	3 1/2	4	11/16 x 7/8	53

STYLE 220



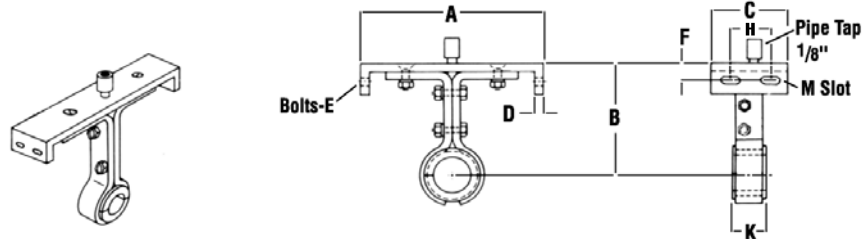
Conveyor Diameter	Coupling Diameter	Part Number	B	C	D	E	F	H	K	L	M Slot	Weight Each
4	1	CH42201	3 5/8	4	1/4	1/4	6 1/4	2	1 1/2	7 1/4	5/16 x 1/2	5
6	1 1/2	CH6220112	4 1/2	4	1/4	3/8	8 3/4	2 1/2	2	9 3/4	7/16 x 7/8	7
9	1 1/2	CH9220112	6 1/8	4	1/4	3/8	12 1/4	2 1/2	2	13 1/2	7/16 x 7/8	9 11
		CH92202	6 1/8	4	1/4	3/8	12 1/4	2 1/2	2	13 1/2		
10	1 1/2	CH10220112	6 3/8	4	1/4	3/8	13 1/4	2 1/2	2	14 1/2	7/16 x 7/8	10 12
		CH102202	6 3/8	4	1/4	3/8	13 1/4	2 1/2	2	14 1/2		
12	2 2 7/16 3	CH122202	7 3/4	5	3/8	1/2	15 3/4	2 1/2	2	17 1/2	9/16 x 3/4	16 21 28
		CH122202716	7 3/4	5	3/8	1/2	15 3/4	2 1/2	3	17 1/2		
		CH122203	7 3/4	5	3/8	1/2	15 3/4	2 1/2	3	17 1/2		
14	2 7/16 3	CH142202716	9 1/4	5	3/8	1/2	17 3/4	2 1/2	3	19 1/2	9/16 x 3/4	26 33
		CH142203	9 1/4	5	3/8	1/2	17 3/4	2 1/2	3	19 1/2		
16	3	CH162203	10 5/8	5	3/8	1/2	19 3/4	2 1/2	3	21 1/2	9/16 x 3/4	39
18	3 3 7/16	CH182203	12 1/8	5	1/2	5/8	22 1/4	3 1/2	3	24 1/2	11/16 x 7/8	41 49
		CH182203716	12 1/8	5	1/2	5/8	22 1/4	3 1/2	4	24 1/2		
20	3 3 7/16	CH202203	13 1/2	5	1/2	5/8	24 1/4	3 1/2	3	26 1/2	11/16 x 7/8	43 51
		CH202203716	13 1/2	5	1/2	5/8	24 1/4	3 1/2	4	26 1/2		
24	3 7/16	CH242203716	16 1/2	5	1/2	5/8	28 1/4	3 1/2	4	30 1/2	11/16 x 7/8	57

ASYBCO

HANGERS

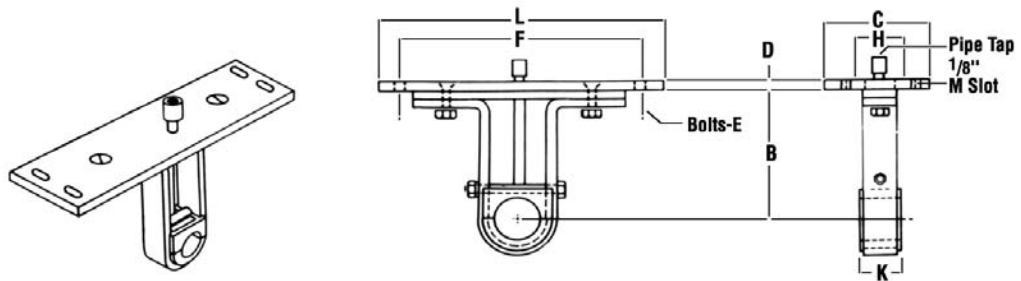


STYLE 226



Conveyor Diameter	Coupling Diameter	Part Number	A	B	C	D	E	F	H	K	M Slot	Weight Each
4	1	CH42261	5	3 5/8	4	1/4	1/4	5/8	2	1 1/2	5/16 x 1/2	4
6	1 1/2	CH6226112	7	4 1/2	4	1/4	3/8	3/4	2 1/2	2	7/16 x 7/8	6
9	1 1/2	CH9226112	10	6 1/8	4	1/4	3/8	1	2 1/2	2	7/16 x 7/8	8
	2	CH92262	10	6 1/8	4	1/4	3/8	1	2 1/2	2	7/16 x 7/8	9
10	1 1/2	CH10226112	11	6 3/8	4	1/4	3/8	1	2 1/2	2	7/16 x 7/8	9
	2	CH102262	11	6 3/8	4	1/4	3/8	1	2 1/2	2	7/16 x 7/8	11
12	2	CH122262	13	7 3/4	5	3/8	1/2	1 1/4	2 1/2	2	9/16 x 3/4	13
	2 7/16	CH122262716	13	7 3/4	5	3/8	1/2	1 1/4	2 1/2	3	9/16 x 3/4	18
	3	CH122263	13	7 3/4	5	3/8	1/2	1 1/4	2 1/2	3	9/16 x 3/4	24
14	2 7/16	CH142262716	15	9 1/4	5	3/8	1/2	1 3/8	2 1/2	3	9/16 x 3/4	2
	3	CH142263	15	9 1/4	5	3/8	1/2	1 3/8	2 1/2	3	9/16 x 3/4	29
16	3	CH162263	17	10 5/8	5	3/8	1/2	1 3/8	2 1/2	3	9/16 x 3/4	34
18	3	CH182263	19	12 1/8	5	1/2	5/8	1 5/8	3 1/2	3	11/16 x 7/8	35
	3 7/16	CH182263716	19	12 1/8	5	1/2	5/8	1 5/8	3 1/2	4	11/16 x 7/8	46
20	3	CH202263	21	13 1/2	5	1/2	5/8	1 5/8	3 1/2	3	11/16 x 7/8	41
	3 7/16	CH202263716	21	13 1/2	5	1/2	5/8	1 5/8	3 1/2	4	11/16 x 7/8	52
24	3 7/16	CH242263716	25	16 1/2	5	1/2	5/8	1 3/4	3 1/2	4	11/16 x 7/8	63

STYLE 230



Conveyor Diameter	Coupling Diameter	Part Number	B	C	D	E	F	H	K	L	M Slot	Weight Each
6	1 1/2	CH6230112	4 1/2	4	1/4	3/8	8 3/4	2 1/2	2	9 3/4	7/16 x 7/8	6
9	1 1/2	CH9230112	6 1/8	4	1/4	3/8	12 1/4	2 1/2	2	13 1/2	7/16 x 7/8	8
	2	CH92302	6 1/8	4	1/4	3/8	12 1/4	2 1/2	2	13 1/2	7/16 x 7/8	10
10	1 1/2	CH10230112	6 3/8	4	1/4	3/8	13 1/4	2 1/2	2	14 1/2	7/16 x 7/8	9
	2	CH102302	6 3/8	4	1/4	3/8	13 1/4	2 1/2	2	14 1/2	7/16 x 7/8	11
12	2	CH122302	7 3/4	5	3/8	1/2	15 3/4	2 1/2	2	17 1/2	9/16 x 3/4	5
	2 7/16	CH122302716	7 3/4	5	3/8	1/2	15 3/4	2 1/2	3	17 1/2	9/16 x 3/4	20
	3	CH122303	7 3/4	5	3/8	1/2	15 3/4	2 1/2	3	17 1/2	9/16 x 3/4	25
14	2 7/16	CH142302716	9 1/4	5	3/8	1/2	17 3/4	2 1/2	3	19 1/2	9/16 x 3/4	24
	3	CH142303	9 1/4	5	3/8	1/2	17 3/4	2 1/2	3	19 1/2	9/16 x 3/4	29
16	3	CH162303	10 5/8	5	3/8	1/2	19 3/4	2 1/2	3	21 1/2	9/16 x 3/4	35
18	3	CH182303	12 1/8	5	1/2	5/8	22 1/4	3 1/2	3	24 1/2	11/16 x 7/8	34
	3 7/16	CH182303716	12 1/8	5	1/2	5/8	22 1/4	3 1/2	4	24 1/2	11/16 x 7/8	47
20	3	CH202303	13 1/2	5	1/2	5/8	24 1/4	3 1/2	3	26 1/2	11/16 x 7/8	40
	3 7/16	CH202303716	13 1/2	5	1/2	5/8	24 1/4	3 1/2	4	26 1/2	11/16 x 7/8	49
24	3 7/16	CH242303716	16 1/2	5	1/2	5/8	28 1/4	3 1/2	4	30 1/2	11/16 x 7/8	55

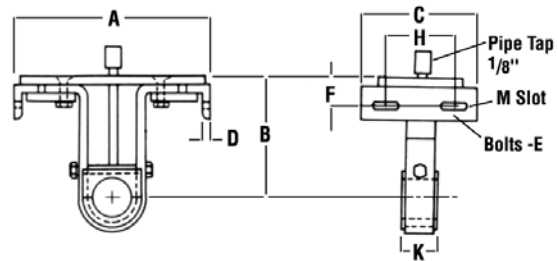
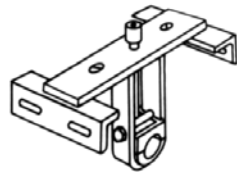
ASBYCO



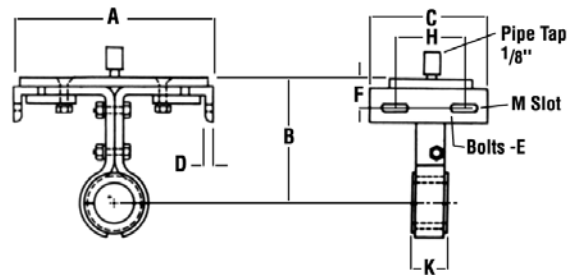
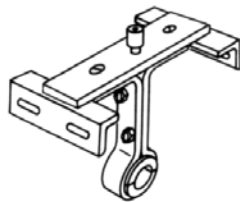
HANGERS

ASYBCO

STYLE 316



STYLE 326



Conveyor Diameter	Coupling Diameter	Part Number		A	B	C	D	E	F	H	K	M Slot
		Style 316	Style 326									
4	1		CH43261	5	3 5/8	5	1/8	1/4	5/8	2	1 1/2	
6	1 1/2	CH6316112	CH6326112	7	4 1/2	6	1/8	3/8	3/4	2 1/2	2	7/16 X 7/8
9	1 1/2 2	CH9316112	CH9326112	10	6 1/8	6	3/16	3/8	1	2 1/2	2	7/16 X 7/8
		CH93162	CH93262	10	6 1/8	6	3/16	3/8	1	2 1/2	2	7/16 X 7/8
10	1 1/2 2	CH10316112	CH10326112	11	6 3/8	6	3/16	3/8	1	2 1/2	2	7/16 X 7/8
		CH103162	CH103262	11	6 3/8	6	3/16	3/8	1	2 1/2	2	7/16 X 7/8
12	2 2 7/16 3	CH123162	CH123262	13	7 3/4	6 1/2	3/16	1/2	1 1/4	2 1/2	2	9/16 X 3/4
		CH123162716	CH123262716	13	7 3/4	6 1/2	3/16	1/2	1 1/4	2 1/2	3	
		CH123163	CH123263	13	7 3/4	6 1/2	3/16	1/2	1 1/4	2 1/2	3	
14	2 7/16 3	CH143162716	CH143262716	15	9 1/4	6 1/2	1/4	1/2	1 3/8	2 1/2	3	9/16 X 3/4
		CH143163	CH143263	15	9 1/4	6 1/2	1/4	1/2	1 3/8	2 1/2	3	
16	3	CH163163	CH163263	17	10 5/8	6 1/2	1/4	1/2	1 3/8	2 1/2	3	9/16 X 3/4
18	3 3 7/16	CH183163	CH183263	19	12 1/8	6 1/2	1/4	5/8	1 5/8	3 1/2	3	11/16 X 7/8
		CH183163716	CH183263716	19	12 1/8	7	1/4	5/8	1 5/8	3 1/2	4	
20	3 3 7/16	CH203163	CH203263	21	13 1/2	6 1/2	1/4	5/8	1 5/8	3 1/2	3	11/16 X 7/8
		CH203163716	CH203263716	21	13 1/2	7	1/4	5/8	1 5/8	3 1/2	4	
24	3 7/16	CH243163716	CH243263716	25	16 1/2	7	5/16	5/8	1 3/4	3 1/2	4	11/16 X 7/8