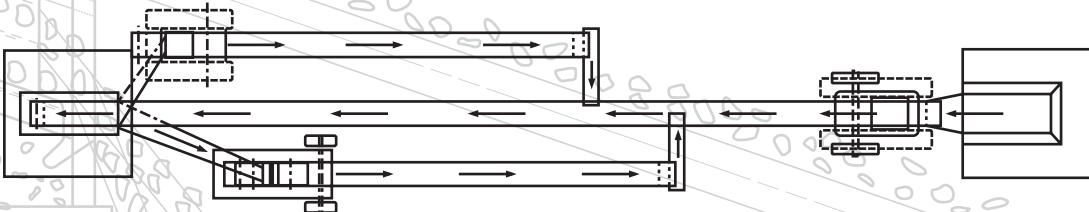
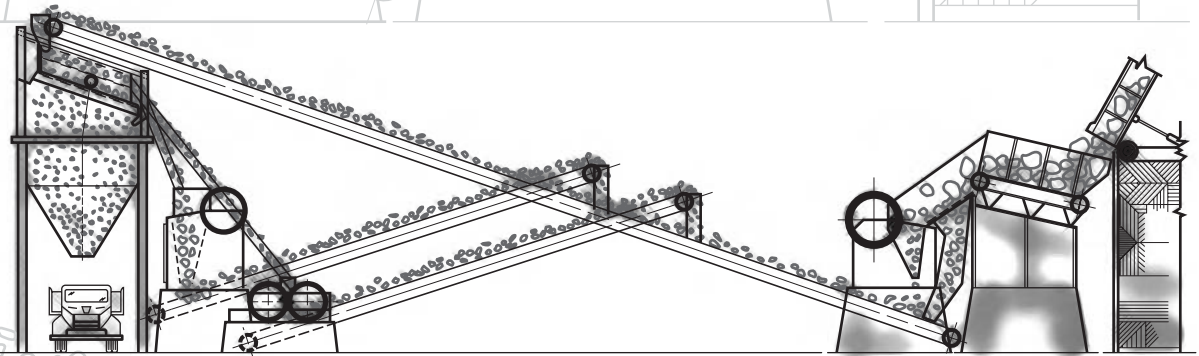
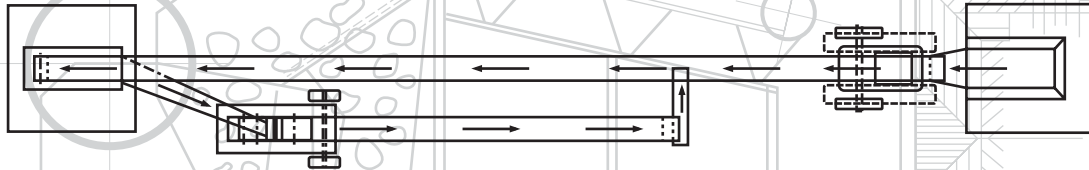
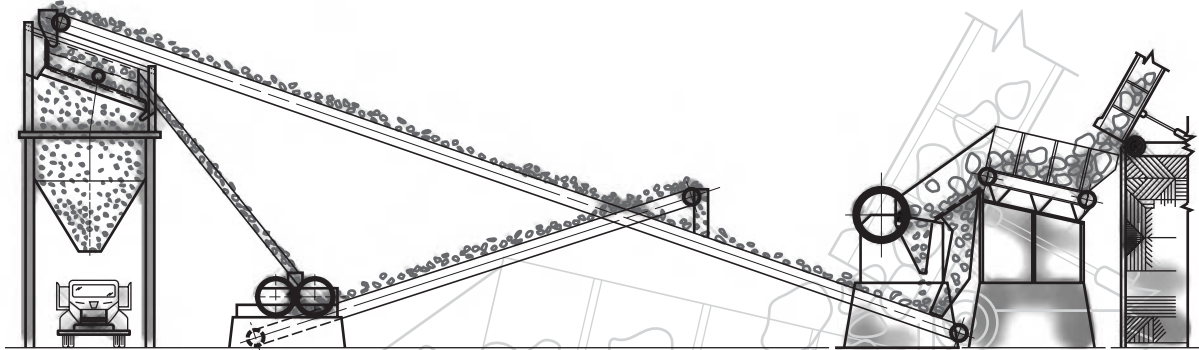




CONCASSAGE CRUSHING EQUIPMENT



ASYBCO

TROUGHING IDLERS



High Efficiency

- 10 000 lbs rating steel wire cable
- Steel bushing
- The continuous Neoprene Rubber Disc are moulded and embedded onto the cable assembly by the Hot Vulcanization.
- High capacity ball bearings mounted in malleable iron housings which are completely packed with grease and tightly sealed.

ADVANTAGES

- Perfect belt adaptation to idler shape.
- No longitudinal belt cracking.
- Double belt life.
- Non-sticking: while turning, the gap between the discs varies in width and breaks down trapped material.
- Increased conveying capacity.
- Permanently self-lubricating.
- Less moving parts, less problems.
- Easily installed.
- Excellent resistance to shocks, abrasion and corrosion.



TYPE 1

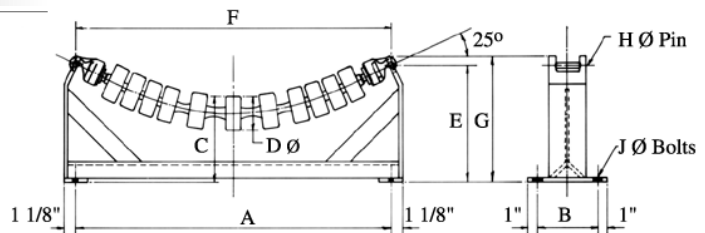
Has 3" dia. rolls and single ball bearings each end in belt widths of 18", 24", 30" and 36". This type is designed for mounting on standard support frames or 1/2" dia. steel cable.



TYPE 2

Has 3 5/8" dia. rolls and double ball bearings each end in belt widths of 42" and 48". This type is designed for mounting on standard support frames or 5/8" dia. steel cable.

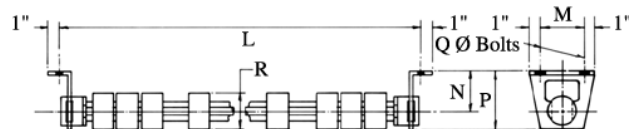
FLEXIBLE 25° CATENARY BELT CONVEYOR



Belt Width	Idler Type	Dimensions									Weight (lbs.)	
		A	B	C	D	E	F	G	H	J	Roller	Frame
18"	1	27	6	7 1/2	3	10 5/8	28 1/2	11 1/4	1/2	1/2	9	26
24"	1	33	6	7 1/2	3	11	34 1/2	11 5/8	1/2	1/2	11	29
30"	1	39	6	7 1/2	3	11 5/8	40 1/2	12 1/4	1/2	1/2	13	32
36"	1	45	6	7 1/2	3	12 1/4	46 1/2	12 7/8	1/2	1/2	15	36
42"	2	51	7 1/2	8 1/2	3 5/8	13 5/8	51 1/4	14 3/8	5/8	1/2	19	52
48"	2	57	7 1/2	8 1/2	3 5/8	14 1/4	57 1/4	15	5/8	1/2	21	56

RIGID BELT CONVEYOR RETURN IDLERS

Rigid return idlers are manufactured by the same process outlined above except a solid steel shaft is provided in place of the flexible cable. This type idler is available in belt widths of 18", 24", 30", 36", 42" and 48".



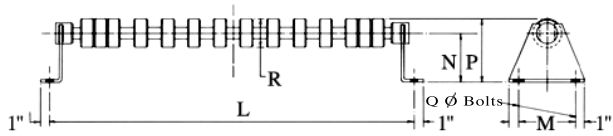
Belt Width	Idler Type	Dimensions							Weight (lbs.)	
		L	M	N	P	Q	R	Roller	Brackets	
18"	1	27	4	4 1/4	6	1/2	3	8	5	
24"	1	33	4	4 1/4	6	1/2	3	9	5	
30"	1	39	4	4 1/4	6	1/2	3	10	5	
36"	1	45	4	4 1/4	6	1/2	3	11	5	
42"	2	51	4	4 1/4	6	1/2	3 5/8	12	5	
48"	2	57	4	4 1/4	6	1/2	3 5/8	13	5	

ASBYCO



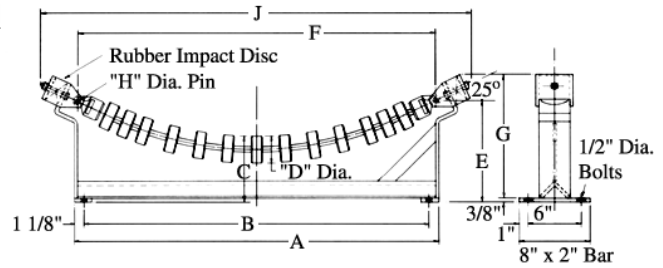
TROUGHING IDLERS

RIGID FLAT CONVEYOR IDLERS



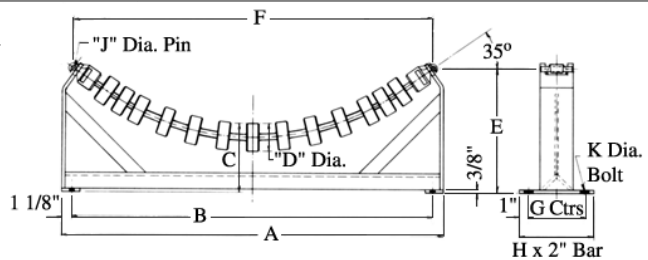
Belt Width	End Brackets	Dimensions						Weight (lbs.)	
		L	M	N	P	Q	R	Roller	Frame
18"	std.	27	6	5 1/4	6 3/4	1/2	3	15	5
24"	std.	33	6	5 1/4	6 3/4	1/2	3	16	5
30"	std.	39	6	5 1/4	6 3/4	1/2	3	17	5
18"	high	27	6	6	7 1/2	1/2	3	15	6
24"	high	33	6	6	7 1/2	1/2	3	16	6
30"	high	39	6	6	7 1/2	1/2	3	17	6

FLEXIBLE 25° CATENARY BELT CONVEYOR IMPACT



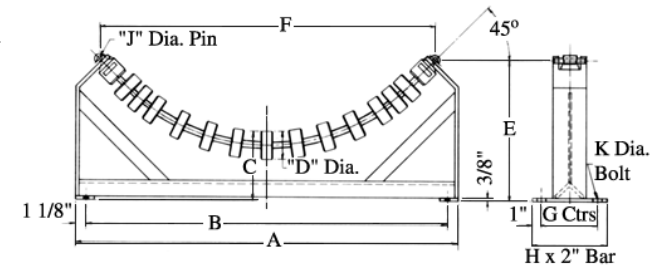
Belt Width	Idler Type	Dimensions									Weight (lbs.)	
		A	B	C	D	E	F	G	H	J	Roller	Frame
18"	1	29 1/4	27	7 1/2	3	10 5/8	28 1/2	13 1/4	1/2	36 3/4	9	33
24"	1	35 1/4	33	7 1/2	3	11	34 1/2	13 5/8	1/2	42 3/4	11	35
30"	1	41 1/4	39	7 1/2	3	11 5/8	40 1/2	14 1/4	1/2	48 3/4	13	37
36"	1	47 1/4	45	7 1/2	3	12 1/4	46 1/2	14 7/8	1/2	54 3/4	15	40
42"	2	53 1/4	51	8 1/2	3 5/8	13 5/8	51 1/4	16 1/4	5/8	59 1/2	19	56
48"	2	59 1/4	57	8 1/2	3 5/8	14 1/4	57 1/4	16 7/8	5/8	65 1/2	21	60

FLEXIBLE 35° CATENARY BELT CONVEYOR



Belt Width	Idler Type	Dimensions									Weight (lbs.)		
		A	B	C	D	E	F	G	H	J	K	Roller	Frame
18"	1	29 1/4	27	7 1/2	3	11 3/4	27 1/8	6	8	1/2	1/2	9.0	28.1
24"	1	35 1/4	33	7 1/2	3	13	32 3/4	6	8	1/2	1/2	11.0	31.6
30"	1	41 1/4	39	7 1/2	3	13 5/8	38 1/2	6	8	1/2	1/2	13.0	35.1
36"	1	47 1/4	45	7 1/2	3	14 1/2	44 1/4	6	8	1/2	1/2	15.0	38.5
42"	2	53 1/4	51	8 1/2	3 5/8	15 1/4	49	7 1/2	9 1/2	5/8	1/2	19.0	56.0
48"	2	59 1/4	57	8 1/2	3 5/8	16 1/8	54 3/4	7 1/2	9 1/2	5/8	1/2	21.0	61.0

FLEXIBLE 45° CATENARY BELT CONVEYOR



Belt Width	Idler Type	Dimensions									Weight (lbs.)		
		A	B	C	D	E	F	G	H	J	K	Roller	Frame
30"	1	41 1/4	39	7 1/2	3	14 3/4	36 1/4	6	8	1/2	1/2	13.0	36.8
36"	1	47 1/4	45	7 1/2	3	15 7/8	41 1/8	6	8	1/2	1/2	15.0	40.5
42"	2	53 1/4	51	8 1/2	3 5/8	16 7/8	46	7 1/2	9 1/2	5/8	1/2	19.0	59.2
48"	2	59 1/4	57	8 1/2	3 5/8	18	51 3/4	7 1/2	9 1/2	5/8	1/2	21.0	64.5

ASYBCO

BELT CONVEYOR PULLEYS



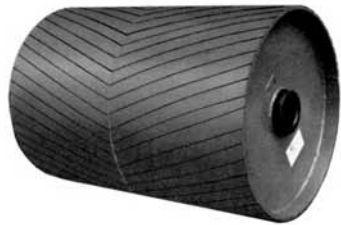
Vulcanized Rubber Lagging



Spiral Drum Pulleys



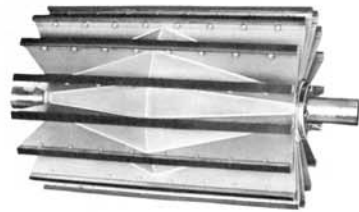
Herringbone Rubber Lagging



Spiral Wing Pulleys



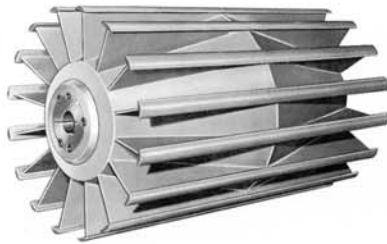
Lagged Wing Pulleys



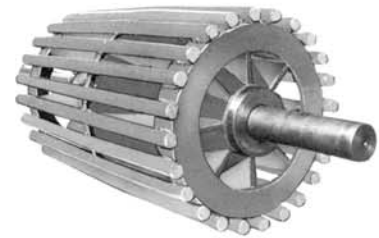
Special Drum Type Pulleys



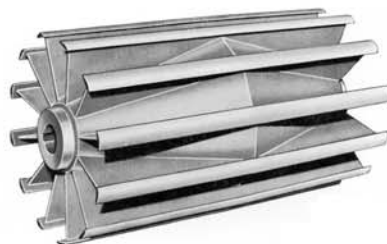
Wing Pulleys With Dodge Taper-Lock Hubs And Bushing



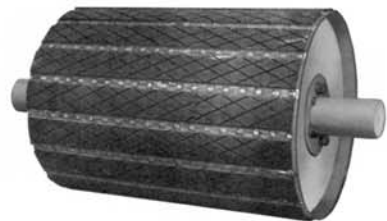
Special Self Cleaning Pulleys



Wing Pulleys With Solid Hubs



Holz Slide Lag

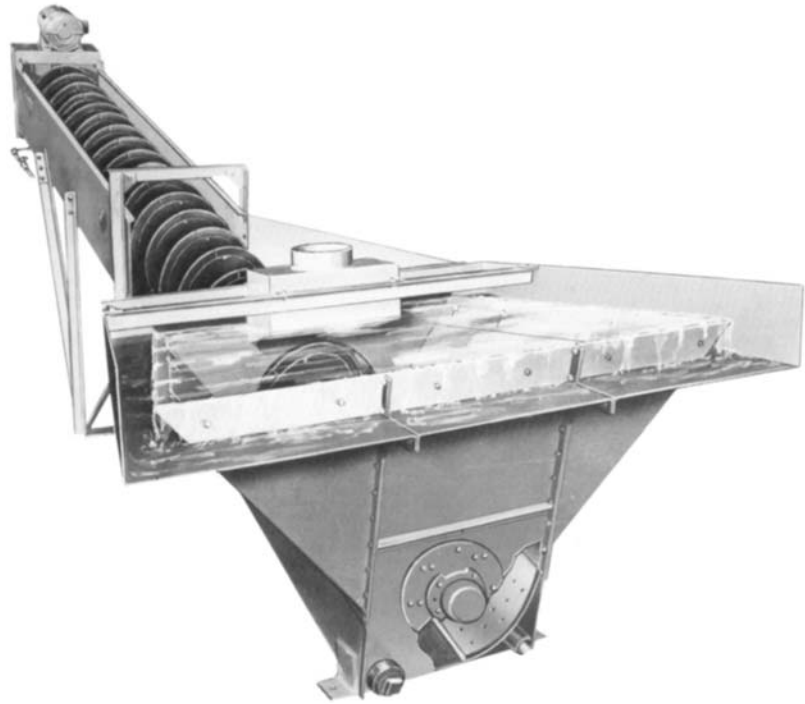


ASYBCO



FINE AND COARSE MATERIAL WASHERS

ASYBCO

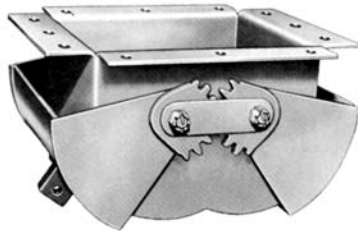


TUBS

FEED BOXES



STEEL BIN GATES



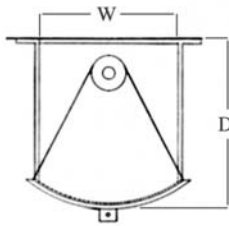
TYLE 'DG'



TYLE 'S'

ASBYCO

STYLE S



DUAL BINGATES HAVE A HARD SURFACING ROD ON LIP EDGE

Catalog Number	Size			Type	Plate Thickness			Approx. Shipping Weight
	Width	Length	Depth		Body	Clams	Gears	
66-S-316	6"	6"	8"	S	3/16"	3/16"	-	20
88-S-14	8"	8"	10"	S	1/4"	1/4"	-	50
1010-S-14	10"	10"	11"	S	1/4"	1/4"	-	70
1212-S-14	12"	12"	15 1/2"	S	1/4"	1/4"	-	90
1212-D-14	12"	12"	10 1/2"	DG	1/4"	1/4"	5/8"	80
1216-S-14	12"	16"	15 1/2"	S	1/4"	1/4"	-	100
1216-D-14	12"	16"	10 1/2"	DG	1/4"	1/4"	5/8"	90
1414-S-14	14"	14"	17 1/4"	S	1/4"	1/4"	-	115
1414-D-14	14"	14"	11 1/4"	DG	1/4"	1/4"	5/8"	95
1414-D-38	14"	14"	11 1/2"	DG	3/8"	3/8"	3/4"	140
1420-S-14	14"	20"	17 1/4"	S	1/4"	1/4"	-	135
1420-D-38	14"	20"	11 1/2"	DG	3/8"	3/4"	-	160
1515-D-14	15"	15"	12"	DG	1/4"	1/4"	3/4"	105
1515-D-38	15"	15"	12"	DG	3/8"	3/8"	3/4"	150
1520-D-38	15"	20"	12"	DG	3/8"	3/8"	3/4"	170
1524-D-38	15"	24"	12"	DG	3/8"	3/8"	3/4"	180
1616-D-14	16"	16"	12 3/4"	DG	1/4"	1/4"	3/4"	115
1616-D-38	16"	16"	12 3/4"	DG	3/8"	3/8"	7/8"	170
1620-D-38	16"	20"	12 3/4"	DG	3/8"	3/8"	7/8"	190
1624-D-38	16"	24"	12 3/4"	DG	3/8"	3/8"	7/8"	205
1818-D-38	18"	18"	13 1/2"	DG	3/8"	3/8"	7/8"	200
1822-D-38	18"	22"	13 1/2"	DG	3/8"	3/8"	7/8"	215
1826-D-38	18"	26"	13 1/2"	DG	3/8"	3/8"	7/8"	238
2020-D-38	20"	20"	16"	DG	3/8"	3/8"	1"	255
2024-D-38	20"	24"	16"	DG	3/8"	3/8"	1"	280
2028-D-38	20"	28"	16"	DG	3/8"	3/8"	1"	300
2222-D-38	22"	22"	16"	DG	3/8"	3/8"	1"	285
2226-D-38	22"	26"	16"	DG	3/8"	3/8"	1"	310
2424-D-38	24"	24"	17 1/2"	DG	3/8"	3/8"	1"	320
2428-D-38	24"	28"	17 1/2"	DG	3/8"	3/8"	1"	345
2432-D-38	24"	32"	17 1/2"	DG	3/8"	3/8"	1"	370

STYLE DG

